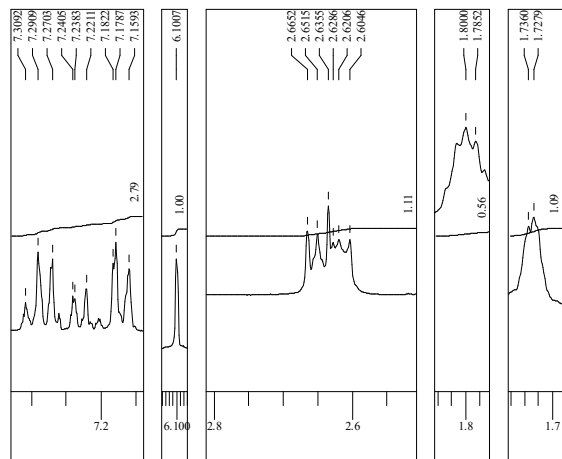
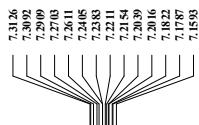
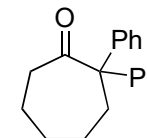
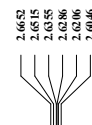


2,2-diphenylcycloheptanone (**2**)

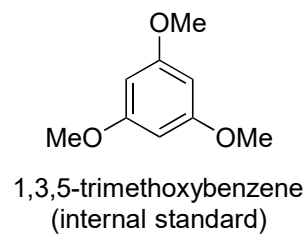


6.1007

3.7776



2,2-diphenylcycloheptanone (**2**)
¹H NMR (400 MHz, CDCl₃)



purity of 2,2-diphenylcycloheptanone (**2**): 98.5%

	product (2)	internal standard (1,3,5-trimethoxybenzene)
Molecular Weight	264.37	168.19
amount	14.6 mg	11.1 mg (purity: 99.0%)
proton	4H	3H
area	1.11	1.00

